

ST-EXT-6.B STUD(9) : 9'-11 3/4" Sp: 24"

1st: 24"

StBlk: 0

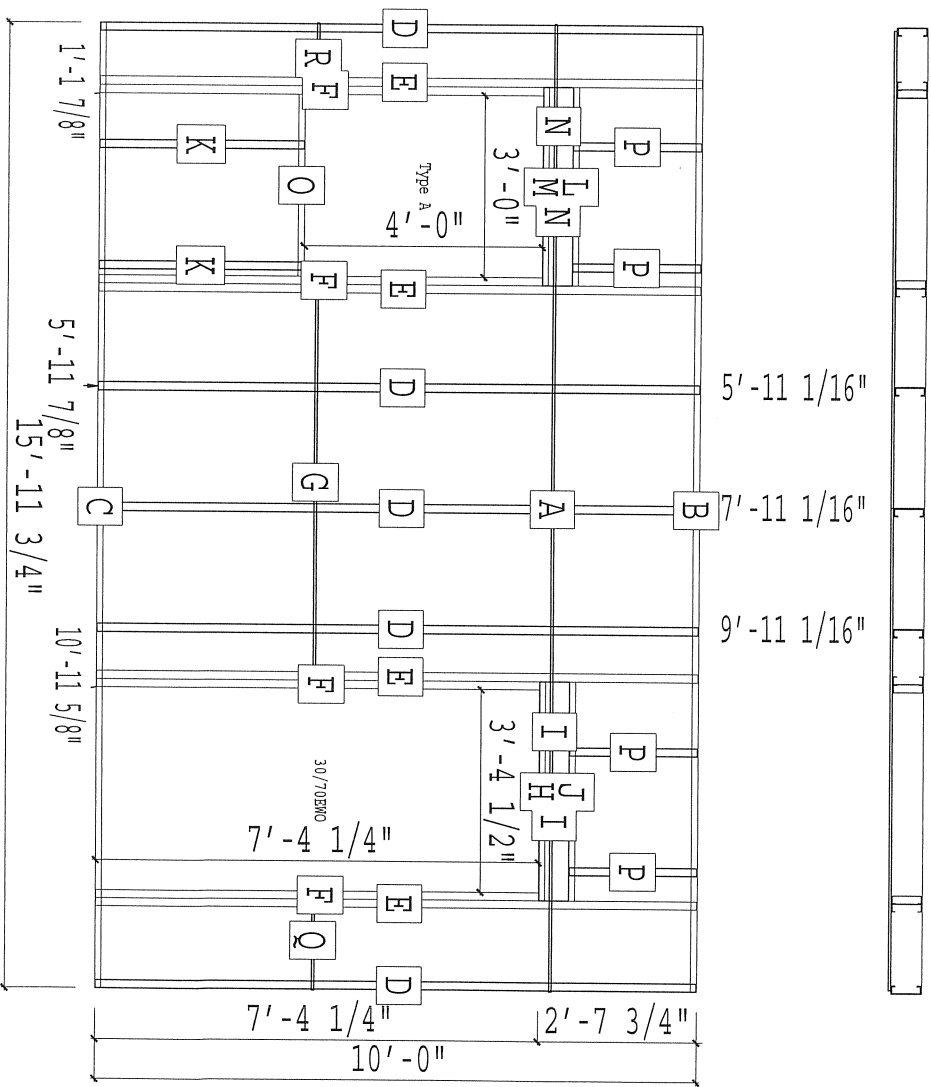
07/23/2003

PANEL NOTES
Horizontal bracing is 48" on center.
HGHT: 10'-0"

Panels are fabricated 1/4" shorter than designed width as shown on panel drawings to allow for concrete elevation inconsistencies.

Panels are anchored to floor with 1/4" X 1 1/2" long split drive anchors 24" on center close to studs.

Studs are layed out under trusses per layout drawing supplied by others. Approval of shop drawings releases Gran Contracting from adding studs under trusses after roof is set.



PIECES LIST

A	1	150CRC050-54	16'-0"	HORIZONTAL BRACING
B	1	600T125-54	15'-11 3/4"	TOP TRACK
C	1	600T125-54	15'-11 3/4"	BOTTOM TRACK
D	5	600S162-54	9'-11 3/4"	STUD
E	4	600S162-54	9'-11 3/4"	KING STUD
F	4	600S162-54	7'-4 1/8"	JAMB STUD
G	1	150CRC050-54	6'-9 3/4"	HORIZONTAL BRACING
H	1	600T125-54	3'-7 3/4"	HEADER BOTTOM TRACK
I	2	600S162-54	3'-7 3/4"	HEADER
J	1	600T125-54	3'-7 3/4"	HEADER TOP TRACK
K	2	600S162-54	3'-4"	CRIPPLE
L	1	600T125-54	3'-3 1/4"	HEADER TOP TRACK
M	1	600T125-54	3'-3 1/4"	HEADER BOTTOM TRACK
N	2	600S162-54	3'-3 1/4"	HEADER
O	1	600T125-54	3'-0"	STILL TRACK
P	4	600S162-54	2'-1 3/8"	CRIPPLE
Q	1	150CRC050-54	1'-7 3/4"	HORIZONTAL BRACING
R	1	150CRC050-54	1'-2"	HORIZONTAL BRACING

TALL